

# TerraCrown<sup>®</sup>

*Epoxy-Based Terrazzo Flooring System*





# ABOUT TerraCrown®

## WHAT IS TERRAZZO?

Terrazzo is timeless and has roots from around the world dating back over 500 years to Italy, where marble was the primary material of choice for flooring. The Venetians invented the term “terrazzo” in the 20th century. Workers would use large marble chips into wet cement that was later ground and hand polished. As a result, terrazzo created a more uniform surface appearance, making these floors almost impenetrable to moisture. Today the majority of installations are epoxy-based. As a result, TerraCrown® Epoxy Terrazzo System has greater design flexibility, faster application rates, lighter weight, higher strength, and longer life cycles. Epoxy Terrazzo remains one of the market’s most durable and cost-effective flooring systems.

### DURABLE

The resin-based TerraCrown® Epoxy Terrazzo System is long-lasting and stronger than other flooring systems. It can often outlast the life of the entire building. It is perfect for high-traffic areas and can withstand wear and tear for years to come. The long-life cycle of Epoxy Terrazzo will significantly reduce the carbon footprint during the floor’s life.

### CLEAN

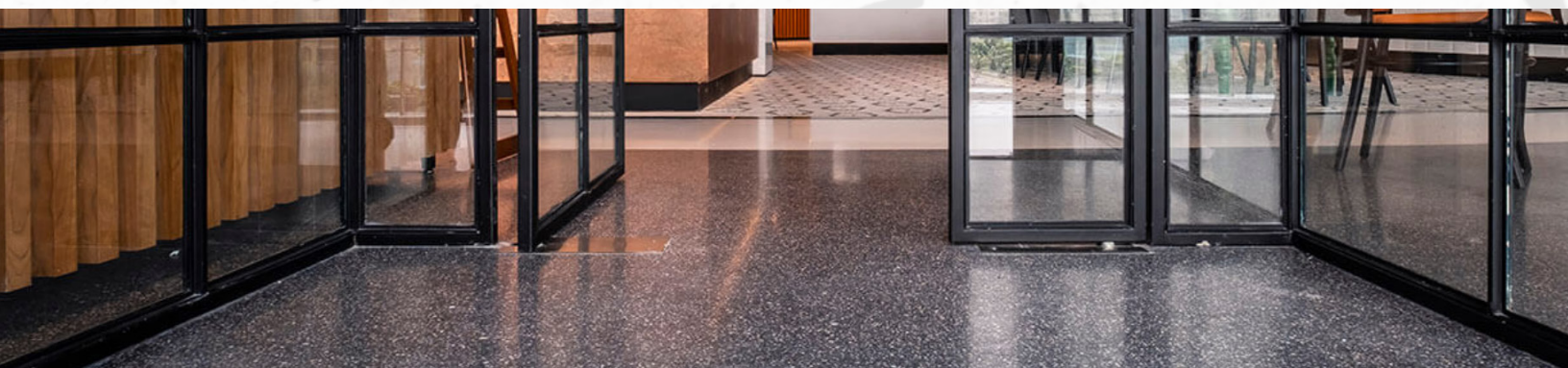
TerraCrown® Epoxy Terrazzo System is resistant to water, stains, mold, mildew, and unwanted odors. The system prevents the growth and spread of bacteria and other pathogens. Epoxy Terrazzo System keeps floors sanitary and easy to clean with low-maintenance costs.

### SUSTAINABLE

TerraCrown® Epoxy Terrazzo System requires no harsh chemicals to clean. The system is crafted from pre or post-consumer recycled waste materials without compromising design or durability. It merges sustainability and beauty. The Thin-set Epoxy Terrazzo surface membrane is the only flooring product that can be rejuvenated, restored, and repolished.

### DESIGN

TerraCrown® is versatile and flexible in design choices. Our Epoxy Terrazzo System complements any style or design concept; minimal, neutral, seamless, and modern. A great design solution for all commercial environments.





# TerraCrown® Epoxy Terrazzo System

## 8370 TerraCrown® Thin-set Epoxy Binder

Thin-set Epoxy Terrazzo incorporates marble, granite, glass chips, oyster, shell, and other aggregates in an epoxy binder and is the surface design layer of the system. 8370 TerraCrown® Thin-set Epoxy Binder is a pigmented, two-component epoxy binder used to create the most decorative and distinct flooring in the construction industry. In addition, pigmented colors can be incorporated to create a unique, “one of a kind” look.

## 8371 TerraCrown® High-Performance Primer

The use of primer improves and strengthens substrates bonding between the properly prepped substrates to the Epoxy Terrazzo Overlay. When 8371 TerraCrown® High-Performance Primer is combined with 8373 CrownShield® Moisture Vapor Barrier creates a moisture-mitigation primer. 8371 is a 100% solids, two-component epoxy primer for TerraCrown® Thin-set Epoxy.

## 8372 TerraCrown® Flex Membrane

This membrane layer is a highly engineered, flexible layer between primer and Thin-set Epoxy Terrazzo overlay that absorbs vibrations and disperses impact force while functioning as an isolation coat to mitigate concrete stress and cracks from transferring to the epoxy floor system. 8372 TerraCrown® Flex Membrane is a 100% solids, two-component, epoxy-based flexible membrane designed for TerraCrown® Thin-set Epoxy.

## 8373 CrownShield® Moisture Vapor Barrier (MVB) Primer

8373 CrownShield® MVB may be used as a single primer coat suitable for various types of concrete. The low-viscosity formula promotes deeper concrete penetration for superior substrate adhesion and generates a higher propensity for sealing and blocking moisture drive than standard epoxy products.

### Typical Uses

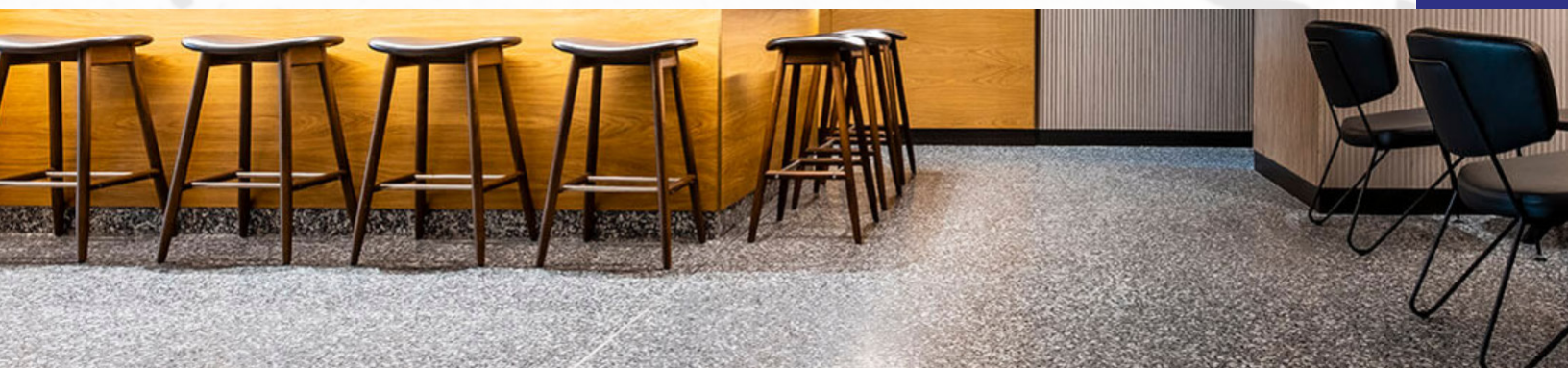
- Airport, Bus, and Train Terminals
- Hospitals and Healthcare Facilities
- Schools and Universities
- Retail Spaces and Mall Common Areas
- High-End Designer Floors



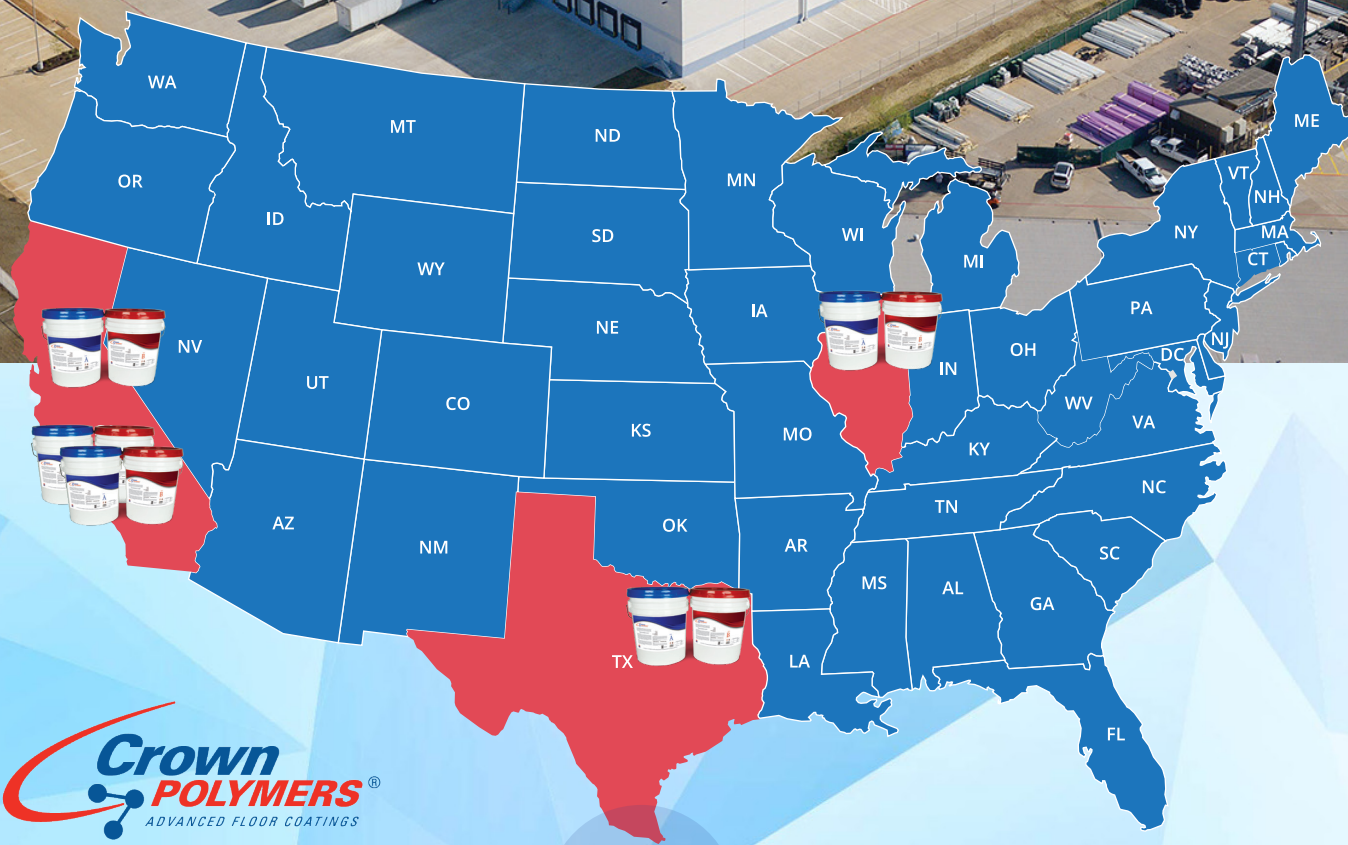
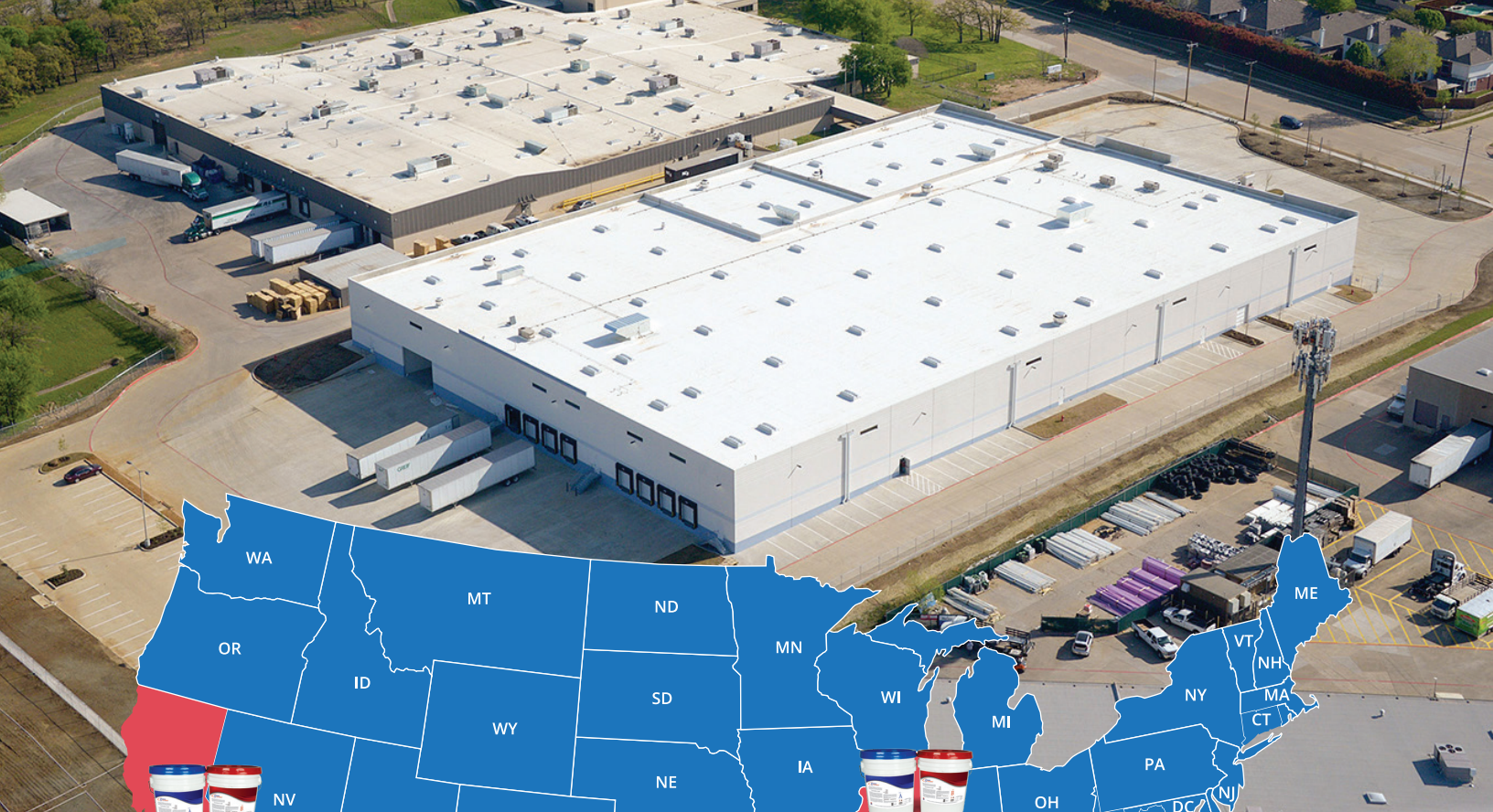
Complies with NTMA (National Terrazzo & Mosaic Association), TTMAC (Terrazzo, Tile & Marble Association of Canada), USDA, FDA, Food and Safety Modernization Act.  
Green Seal® Standard is a registered trade name of Green Seal Inc.  
LEED® (Leadership in Energy and Environmental Design) Rating System is a registered trade name of USGBC (U.S. Green Building Council).

CROWN POLYMERS

847.659.0300







With over 30+ years of industry experience, Crown Polymers is one of the nation's leading manufacturers of high-performance epoxy and urethane-based floor coating products and concrete repair systems for commercial, institutional, and industrial floors. Crown's production capabilities span across California, Texas, and Illinois, with over 1,000,000 square feet of manufacturing space.

## GET IN TOUCH

11111 Kiley Drive, Huntley, IL 60142  
13827 Carmenita Road, Suite 200,  
Santa Fe Springs, CA 90670  
2051 Reliance Pkwy, Bedford, TX 76021  
Telephone: (847) 659-0300  
Website: [crownpolymers.com](http://crownpolymers.com)  
Email: [info@crownpolymers.com](mailto:info@crownpolymers.com)



### DISCLAIMER

All guidelines, recommendations, statements, and technical data contained herein are based on information and tests. The accuracy and completeness of such tests are not guaranteed and are not to be construed as a warranty, expressed or implied. It is the responsibility of the user to document information and tests to determine the intent of the product for ones' own use. The application, job conditions and user assumes all risks and liability resulting from use of the product. We do not suggest or guarantee any hazards listed herein are the only ones, which may exist. Neither seller nor manufacturer shall be liable to the buyer or any third person for any injury, loss or damage directly or indirectly resulting from use of, or inability to use the product. Recommendations or statements, whether in written or verbal, other than those contained herein shall not be binding upon the manufacturer, unless in writing and signed by a corporate officer of the manufacturer. Technical and application information is provided for the purpose of establishing a general profile of the material and proper application procedures. Test performance results were obtained in a controlled environment and Crown Polymers makes no claim that these tests or any other tests accurately represent all environments. Not responsible for any typographical errors.

All registered trademarks are of Crown Polymers Corp. unless otherwise noted.  
© Crown Polymers Corp., 2023 Printed in the US

